

\$599,900 - 1459 Wates Link, Edmonton

MLS® #E4450847

\$599,900

4 Bedroom, 2.50 Bathroom, 2,226 sqft

Single Family on 0.00 Acres

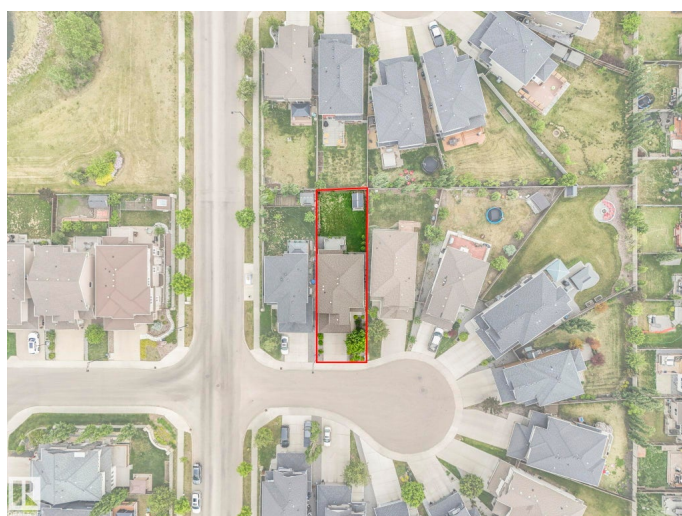
Windermere, Edmonton, AB

Located in a quiet cul-de-sac in desirable Upper Windermere, this 2-storey home offers over 2,225 sq ft above grade plus an unspoiled basement ready for your personal touch. The standout feature? FOUR bedrooms all on the upper level—a rare and highly sought-after layout for growing families. The spacious main floor includes a large front den/home office, hardwood floors, bright living room with gas fireplace, and a chef-inspired kitchen with granite counters, upgraded stainless steel appliances, corner pantry, and oversized island. The dining area leads to an east-facing deck—perfect for sunny morning coffees. A powder room and laundry complete the main level. Upstairs you'll find four generous bedrooms and a full bath, including a primary suite with walk-in closet and 5-piece ensuite. Enjoy EXCLUSIVE ACCESS to the Upper Windermere Private Leisure Centre.

Built in 2012

Essential Information

MLS® #	E4450847
Price	\$599,900
Bedrooms	4
Bathrooms	2.50
Full Baths	2
Half Baths	1



Square Footage	2,226
Acres	0.00
Year Built	2012
Type	Single Family
Sub-Type	Detached Single Family
Style	2 Storey
Status	Active

Community Information

Address	1459 Wates Link
Area	Edmonton
Subdivision	Windermere
City	Edmonton
County	ALBERTA
Province	AB
Postal Code	T6W 0V1

Amenities

Amenities	Air Conditioner, Ceiling 9 ft., Hot Water Natural Gas, No Smoking Home, Recreation Room/Centre, See Remarks
Parking Spaces	4
Parking	Double Garage Attached

Interior

Interior Features	ensuite bathroom
Appliances	Dishwasher - Energy Star, Dryer, Refrigerator, Stove-Electric, Washer
Heating	Forced Air-1, Natural Gas
Fireplace	Yes
Fireplaces	Stone Facing
Stories	2
Has Basement	Yes
Basement	Full, Unfinished

Exterior

Exterior	Wood, Fiber Cement, Stone
Exterior Features	Fenced, Golf Nearby, No Back Lane, No Through Road, Playground Nearby, Public Transportation, Schools, Shopping Nearby, See Remarks
Roof	Asphalt Shingles
Construction	Wood, Fiber Cement, Stone

Foundation Concrete Perimeter

School Information

Elementary Daniel Woodall / St. John
Middle Riverbend Junior /St. John
High Lilian Osborne / MMMary

Additional Information

Date Listed August 1st, 2025
Days on Market 15
Zoning Zone 56
HOA Fees 750
HOA Fees Freq. Annually

DATA IS DEEMED RELIABLE BUT IS NOT GUARANTEED ACCURATE BY THE REALTORS® ASSOCIATION OF EDMONTON. COPYRIGHT 2025 BY THE REALTORS® ASSOCIATION OF EDMONTON. ALL RIGHTS RESERVED.Trademarks are owned or controlled by the Canadian Real Estate Association (CREA) and identify real estate professionals who are members of CREA (REALTOR®, REALTORS®) and/or the quality of services they provide (MLS®, Multiple Listing Service®)
Listing information last updated on August 16th, 2025 at 1:17pm MDT