

\$599,900 - 8516 219 Street, Edmonton

MLS® #E4446933

\$599,900

5 Bedroom, 3.5 Bathroom, 1,924 sqft  
Single Family on 0.00 Acres

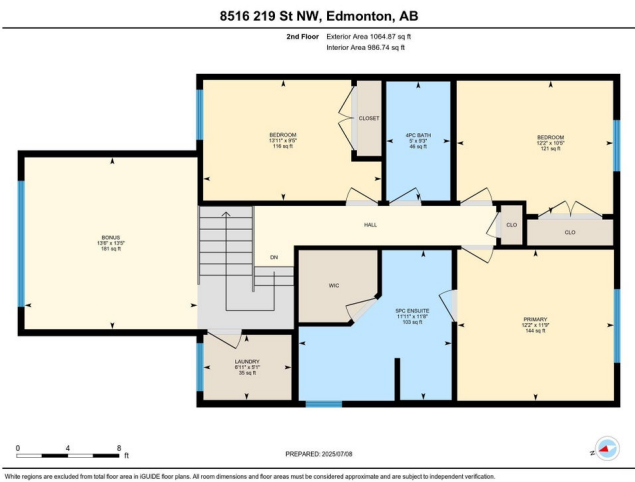
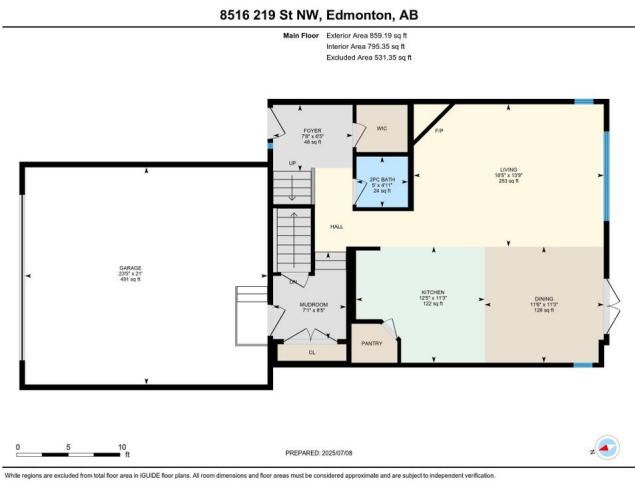
Rosenthal (Edmonton), Edmonton, AB

Welcome to this beautifully maintained 2 Storey home in Rosenthal! Boasting 1924 sq. ft of above-grade living space, features 5 bedrooms, 3.5 baths, a bonus room, and a double attached garage. The bright, open-concept layout includes a spacious living room and dining area. The kitchen boasts SS appliances, quartz countertops, a center island, and a pantry. Formal dining room leads to the west-facing backyard and a large deck, perfect for relaxing and entertaining. A 2-pc bath completes the main floor. Upstairs, you'll find a bonus room, 3 spacious bedrooms and a 4-pc shared bath, with the primary bedroom featuring a walk-in closet and a 5-pc ensuite. The fully finished basement expands your living options with a large family room, two additional bedrooms, and a 3-pc bath. Enjoy access to fantastic amenities nearby, including parks, schools, and shopping. Quick access to the Henday.

Built in 2017

Essential Information

MLS® #	E4446933
Price	\$599,900
Bedrooms	5
Bathrooms	3.50
Full Baths	3



Half Baths	1
Square Footage	1,924
Acres	0.00
Year Built	2017
Type	Single Family
Sub-Type	Detached Single Family
Style	2 Storey
Status	Active

### Community Information

Address	8516 219 Street
Area	Edmonton
Subdivision	Rosenthal (Edmonton)
City	Edmonton
County	ALBERTA
Province	AB
Postal Code	T5T 7C9

### Amenities

Amenities	Deck, Detectors Smoke
Parking	Double Garage Attached

### Interior

Interior Features	ensuite bathroom
Appliances	Dishwasher-Built-In, Dryer, Microwave Hood Fan, Refrigerator, Stove-Electric, Washer
Heating	Forced Air-1, Natural Gas
Stories	3
Has Basement	Yes
Basement	Full, Finished

### Exterior

Exterior	Wood, Stone, Vinyl
Exterior Features	Fenced, Landscaped, Park/Reserve, Picnic Area, Playground Nearby, Public Transportation, Schools, Shopping Nearby
Roof	Asphalt Shingles
Construction	Wood, Stone, Vinyl
Foundation	Concrete Perimeter

### Additional Information

Date Listed	July 10th, 2025
Days on Market	10
Zoning	Zone 58
HOA Fees	105
HOA Fees Freq.	Annually

DATA IS DEEMED RELIABLE BUT IS NOT GUARANTEED ACCURATE BY THE REALTORS® ASSOCIATION OF EDMONTON. COPYRIGHT 2025 BY THE REALTORS® ASSOCIATION OF EDMONTON. ALL RIGHTS RESERVED. Trademarks are owned or controlled by the Canadian Real Estate Association (CREA) and identify real estate professionals who are members of CREA (REALTOR®, REALTORS®) and/or the quality of services they provide (MLS®, Multiple Listing Service®)

Listing information last updated on July 20th, 2025 at 1:32pm MDT