

Courtesy Of Megan Prusko Of Exp Realty

\$189,890 - 1310 7339 South Terwillegar Drive, Edmonton

MLS® #E4446380

\$189,890

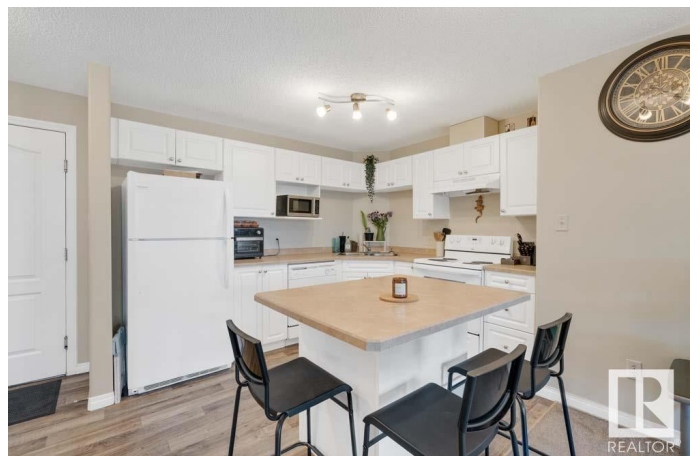
2 Bedroom, 2.00 Bathroom, 833 sqft
Condo / Townhouse on 0.00 Acres

South Terwillegar, Edmonton, AB

BRIGHT & FUNCTIONAL, this spacious 2 BEDROOM, 2 BATH condo in desirable SOUTH TERWILLEGAR offers a smart layout with bedrooms on opposite sides for added privacyâ€”perfect for roommates, downsizers, or first-time buyers. The open-concept living space features a dedicated DINING AREA, generous LIVING ROOM with NATURAL LIGHT, and direct access to the BALCONY. The kitchen offers excellent prep space with a LARGE ISLAND, crisp white cabinetry, and plenty of storage. The PRIMARY BEDROOM includes a WALK-IN CLOSET and PRIVATE 4PC ENSUITE, while the second bedroom is just steps from the main 4PC BATH. You'll love the added STORAGE SPACE, dedicated LAUNDRY ROOM, and secure entry with elevator access. This unit includes a DESIGNATED SURFACE PARKING STALL and is ideally located just minutes from TERWILLEGAR REC CENTRE, shopping, walking trails, and transitâ€”with quick access to ANTHONY HENDAY and WINDERMERE. A fantastic value in a well-managed SW Edmonton community!

Built in 2007

Essential Information



MLS® #	E4446380
Price	\$189,890
Bedrooms	2
Bathrooms	2.00
Full Baths	2
Square Footage	833
Acres	0.00
Year Built	2007
Type	Condo / Townhouse
Sub-Type	Lowrise Apartment
Style	Single Level Apartment
Status	Active

Community Information

Address	1310 7339 South Terwillegar Drive
Area	Edmonton
Subdivision	South Terwillegar
City	Edmonton
County	ALBERTA
Province	AB
Postal Code	T6R 0E1

Amenities

Amenities	Deck, Detectors Smoke, Parking-Visitor
Parking	Stall

Interior

Interior Features	ensuite bathroom
Appliances	Dishwasher-Built-In, Dryer, Hood Fan, Refrigerator, Stove-Electric, Washer
Heating	Baseboard, Natural Gas
# of Stories	4
Stories	1
Has Basement	Yes
Basement	None, No Basement

Exterior

Exterior	Wood, Stone, Vinyl
Exterior Features	Playground Nearby, Public Transportation, Schools, Shopping Nearby

Roof	Asphalt Shingles
Construction	Wood, Stone, Vinyl
Foundation	Concrete Perimeter

Additional Information

Date Listed	July 7th, 2025
Days on Market	14
Zoning	Zone 14
Condo Fee	\$385

DATA IS DEEMED RELIABLE BUT IS NOT GUARANTEED ACCURATE BY THE REALTORS® ASSOCIATION OF EDMONTON. COPYRIGHT 2025 BY THE REALTORS® ASSOCIATION OF EDMONTON. ALL RIGHTS RESERVED.Trademarks are owned or controlled by the Canadian Real Estate Association (CREA) and identify real estate professionals who are members of CREA (REALTOR®, REALTORS®) and/or the quality of services they provide (MLS®, Multiple Listing Service®)

Listing information last updated on July 21st, 2025 at 11:17am MDT