

## \$250,000 - 228 16035 132 Street, Edmonton

MLS® #E4445956

### \$250,000

2 Bedroom, 2.00 Bathroom, 966 sqft

Condo / Townhouse on 0.00 Acres

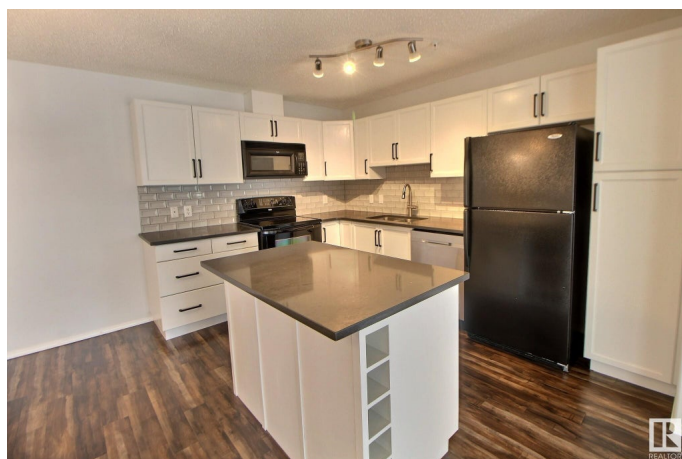
Oxford, Edmonton, AB

Located in a building with ample amenities, this 2 bedroom unit is sure to impress. There is a gym, theatre room, games room, social room, outdoor gazebo patio area, and a rooftop patio with a view of downtown Edmonton. The unit features an open floor plan with a spacious, upgraded kitchen with quartz counters and a centre island. The primary suite is on one side with walkthrough closets and a full ensuite. On the other side is the second bedroom and another full bathroom. The balcony faces a quiet area towards the back of the building with a view of the lake. This unit also features in suite laundry, a BRAND NEW fan coil unit (March 2025), an air cooling system (similar to AC), and underground parking and storage. This home is a MUST SEE!

Built in 2005

### Essential Information

MLS® #	E4445956
Price	\$250,000
Bedrooms	2
Bathrooms	2.00
Full Baths	2
Square Footage	966
Acres	0.00
Year Built	2005



Type	Condo / Townhouse
Sub-Type	Lowrise Apartment
Style	Single Level Apartment
Status	Active

### Community Information

Address	228 16035 132 Street
Area	Edmonton
Subdivision	Oxford
City	Edmonton
County	ALBERTA
Province	AB
Postal Code	T6V 0B4

### Amenities

Amenities	Detectors Smoke, Exercise Room, Gazebo, Parking-Visitor, Party Room, Recreation Room/Centre, Secured Parking, Security Door, Social Rooms, Storage Cage, Rooftop Deck/Patio
Parking	Underground
Is Waterfront	Yes

### Interior

Interior Features	ensuite bathroom
Appliances	Dishwasher-Built-In, Dryer, Microwave Hood Fan, Refrigerator, Stove-Electric, Washer, Window Coverings
Heating	Fan Coil, Forced Air-1, Natural Gas
# of Stories	4
Stories	1
Has Basement	Yes
Basement	None, No Basement

### Exterior

Exterior	Wood, Vinyl
Exterior Features	Backs Onto Lake, No Through Road, Park/Reserve, Picnic Area, Public Transportation, Shopping Nearby, View Downtown, View Lake
Roof	Asphalt Shingles
Construction	Wood, Vinyl
Foundation	Concrete Perimeter

### Additional Information

Date Listed	July 3rd, 2025
Days on Market	4
Zoning	Zone 27
Condo Fee	\$656

DATA IS DEEMED RELIABLE BUT IS NOT GUARANTEED ACCURATE BY THE REALTORS® ASSOCIATION OF EDMONTON. COPYRIGHT 2025 BY THE REALTORS® ASSOCIATION OF EDMONTON. ALL RIGHTS RESERVED. Trademarks are owned or controlled by the Canadian Real Estate Association (CREA) and identify real estate professionals who are members of CREA (REALTOR®, REALTORS®) and/or the quality of services they provide (MLS®, Multiple Listing Service®)

Listing information last updated on July 7th, 2025 at 1:17am MDT