

\$98,000 - On Township Road 552, Rural Parkland County

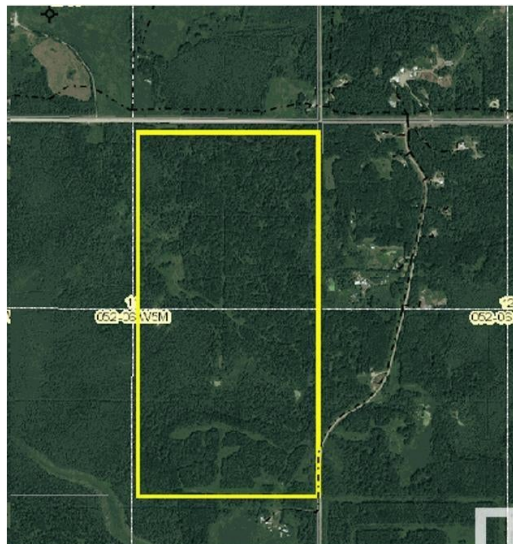
MLS® #E4445728

\$98,000

0 Bedroom, 0.00 Bathroom,
Rural on 317.79 Acres

None, Rural Parkland County, AB

Expand your pasture acres without buying land! The Assignment of Long Term Grazing Lease GRL 870281 is for sale. 317.79 leasehold acres primarily treed. 63 AUMS. 10 year term. Current expiry date is 31-May 2031. Annual rent is \$6.05/AUM (314.37 + \$15.72 (GST) = \$330.09). It can be renewed in 2031, contingent on the leaseholder's adherence to regulations. Dugout in NW, spring in central part of lease, also water in SE. Fences are in need of repair. There is access in the southeast corner of lease. To qualify as a leaseholder, individuals must be Canadian citizens aged 18 or older and must use the land exclusively for grazing their own cattle. They are prohibited from transferring the lease to another party for a minimum of three years. Construction of homes, land cultivation, and timber harvesting are not permitted under these leases. Grazing Leases are governed by Alberta Parks & Environment



Essential Information

MLS® #	E4445728
Price	\$98,000
Bathrooms	0.00
Acres	317.79

Type	Rural
Sub-Type	Vacant Lot/Land
Status	Active

Community Information

Address	On Township Road 552
Area	Rural Parkland County
Subdivision	None
City	Rural Parkland County
County	ALBERTA
Province	AB
Postal Code	T0E 2B0

Exterior

Exterior Features	See Remarks
-------------------	-------------

Additional Information

Date Listed	July 3rd, 2025
Days on Market	64
Zoning	Zone 90

DATA IS DEEMED RELIABLE BUT IS NOT GUARANTEED ACCURATE BY THE REALTORS® ASSOCIATION OF EDMONTON. COPYRIGHT 2025 BY THE REALTORS® ASSOCIATION OF EDMONTON. ALL RIGHTS RESERVED. Trademarks are owned or controlled by the Canadian Real Estate Association (CREA) and identify real estate professionals who are members of CREA (REALTOR®, REALTORS®) and/or the quality of services they provide (MLS®, Multiple Listing Service®)

Listing information last updated on September 5th, 2025 at 8:48am MDT