

Courtesy Of Brendan Hewitt Of RE/MAX Real Estate

\$779,000 - 26 52411 Rge Road 214, Rural Strathcona County

MLS® #E4445250

\$779,000

4 Bedroom, 3.00 Bathroom, 1,241 sqft
Rural on 3.23 Acres

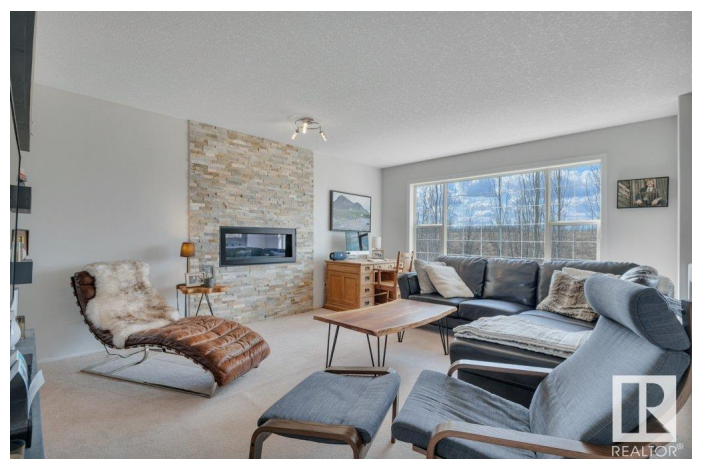
Tanglewood, Rural Strathcona County, AB

Acreage living at its finest, this walk-out bi-level on 3+ acres offers over 1240 sq ft of living space. Having city water eliminates the need for time consuming water hauling. This bright home features 3 bedrooms upstairs, including the primary bedroom with a 3 piece ensuite. The lower level has been extensively updated and has 9-foot ceilings, an additional bedroom, 3 piece bathroom and rec room. Updates include a newer roof, basement reno, in-floor heating and fencing. The property is beautifully landscaped with natural fresh water sources for a gardening area to grow your own produce and a pond for learning how to skate like the next big hockey star and enjoying wildlife. Experience the peace of acreage living with the security of being located within a subdivision. Located 10 minutes from Sherwood Park, it's close to the rapidly growing Ardrossan, spray parks, and a rec centre. Nearby schools provide great educational opportunities. A rare find offering tranquility and modern amenities.

Built in 1999

Essential Information

MLS® #	E4445250
Price	\$779,000



Bedrooms	4
Bathrooms	3.00
Full Baths	3
Square Footage	1,241
Acres	3.23
Year Built	1999
Type	Rural
Sub-Type	Detached Single Family
Style	Bi-Level
Status	Active

Community Information

Address	26 52411 Rge Road 214
Area	Rural Strathcona County
Subdivision	Tanglewood
City	Rural Strathcona County
County	ALBERTA
Province	AB
Postal Code	T8E 2G8

Amenities

Features	Detectors Smoke, No Animal Home, No Smoking Home, Patio, R.V. Storage, Recreation Room/Centre, Vinyl Windows, Walkout Basement, See Remarks
----------	---

Interior

Interior Features	ensuite bathroom
Heating	Forced Air-1, In Floor Heat System, Natural Gas
Fireplace	Yes
Stories	2
Has Basement	Yes
Basement	Full, Finished

Exterior

Exterior	Wood
Exterior Features	Backs Onto Park/Trees, Fruit Trees/Shrubs, Golf Nearby, Playground Nearby, Rolling Land, Schools, Shopping Nearby, Sloping Lot, Treed Lot, Vegetable Garden, See Remarks, Partially Fenced
Construction	Wood

Foundation Concrete Perimeter

Additional Information

Date Listed July 2nd, 2025

Days on Market 28

Zoning Zone 80

DATA IS DEEMED RELIABLE BUT IS NOT GUARANTEED ACCURATE BY THE REALTORS® ASSOCIATION OF EDMONTON. COPYRIGHT 2025 BY THE REALTORS® ASSOCIATION OF EDMONTON. ALL RIGHTS RESERVED. Trademarks are owned or controlled by the Canadian Real Estate Association (CREA) and identify real estate professionals who are members of CREA (REALTOR®, REALTORS®) and/or the quality of services they provide (MLS®, Multiple Listing Service®)

Listing information last updated on July 30th, 2025 at 9:02pm MDT