

## \$549,900 - 230 Pipestone Close, Millet

MLS® #E4442957

**\$549,900**

5 Bedroom, 3.00 Bathroom, 1,856 sqft

Single Family on 0.00 Acres

Millet, Millet, AB

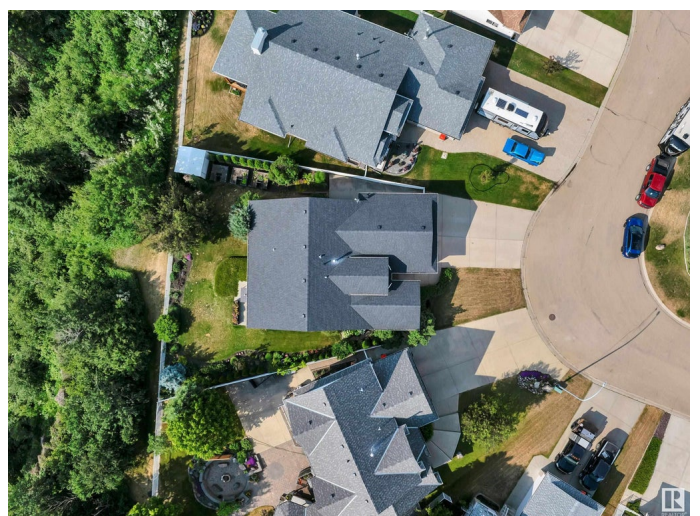
**BACKING PIPESTONE CREEK! PIE LOT! GORGEOUS EXECUTIVE BUNGALOW! 23' x 23' GARAGE!** Searching for the illusive updated home with ravine views & oversized garage? This 1856 sq ft, 5 bed, 3 bath stunner in Moonen Heights shows a 10! Feat: vinyl plank flooring, newly completed basement bathroom & bedrooms, upgraded lighting, paint, gas fireplace, main floor laundry & more! Large entryway leads to the family room w/ vaulted ceiling; perfect spot for family visits. Large dining space wraps around into the kitchen, eat in dining, corner pantry, and living room, w/ access to the back yard. 3 bedrooms up, including the primary bed w/ walk in closet, custom closet, & 4 pce ensuite. The basement is partially finished, w/ 2 big bedrooms, stunning 3 pce bath w/ in floor heating, future rec room, & storage. The pie shaped backyard is a dream! Covered patio area, spacious yard full of trees, shrubs,; abundance of sunlight & privacy. Gate for ravine / trail access to explore all summer! A treat to view, don't miss it!

Built in 2000

### Essential Information

MLS® # E4442957

Price \$549,900



Bedrooms	5
Bathrooms	3.00
Full Baths	3
Square Footage	1,856
Acres	0.00
Year Built	2000
Type	Single Family
Sub-Type	Detached Single Family
Style	Bungalow
Status	Active

### **Community Information**

Address	230 Pipestone Close
Area	Millet
Subdivision	Millet
City	Millet
County	ALBERTA
Province	AB
Postal Code	T0C 1Z0

### **Amenities**

Amenities	Patio, See Remarks
Parking	Double Garage Attached, Over Sized

### **Interior**

Interior Features	ensuite bathroom
Appliances	Dishwasher-Built-In, Dryer, Fan-Ceiling, Microwave Hood Fan, Refrigerator, Storage Shed, Stove-Electric, Washer, Window Coverings
Heating	Forced Air-1, Natural Gas
Fireplace	Yes
Fireplaces	Insert
Stories	1
Has Basement	Yes
Basement	Full, Partially Finished

### **Exterior**

Exterior	Wood, Stucco
Exterior Features	Backs Onto Park/Trees, Fenced, Landscaped, Private Setting, Schools, Shopping Nearby, See Remarks

Roof	Asphalt Shingles
Construction	Wood, Stucco
Foundation	Concrete Perimeter

**Additional Information**

Date Listed	June 18th, 2025
Days on Market	16
Zoning	Zone 80

DATA IS DEEMED RELIABLE BUT IS NOT GUARANTEED ACCURATE BY THE REALTORS® ASSOCIATION OF EDMONTON. COPYRIGHT 2025 BY THE REALTORS® ASSOCIATION OF EDMONTON. ALL RIGHTS RESERVED.Trademarks are owned or controlled by the Canadian Real Estate Association (CREA) and identify real estate professionals who are members of CREA (REALTOR®, REALTORS®) and/or the quality of services they provide (MLS®, Multiple Listing Service®)

Listing information last updated on July 4th, 2025 at 5:32pm MDT