

\$1,999,888 - 512 Hillcrest Point, Edmonton

MLS® #E4432249

\$1,999,888

4 Bedroom, 3.50 Bathroom, 3,909 sqft

Single Family on 0.00 Acres

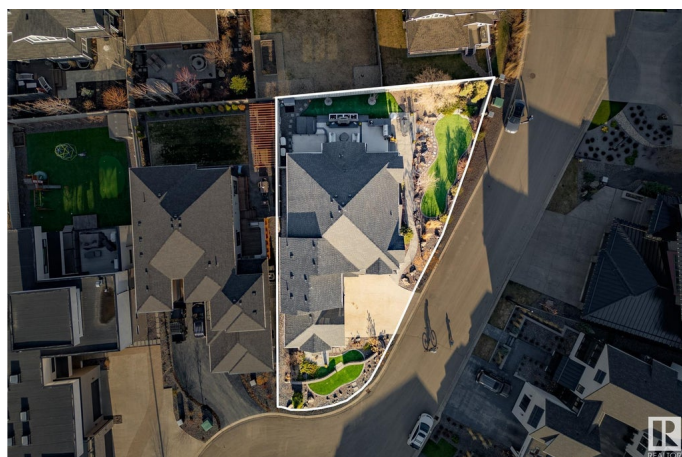
Patricia Heights, Edmonton, AB

Welcome to one of West Edmonton's best-kept secrets—this custom-built home sits on a quiet cul-de-sac just steps from the River Valley trail system. With nearly 4,000 sq ft of refined living, it offers the perfect blend of luxury, privacy, and connection. Inside, enjoy a soaring travertine feature wall, dramatic top-to-bottom staircase, and high-end finishes throughout. Lightly lived in and still showing new home sparkle, it's designed for both family living and upscale entertaining. The backyard is an entertainer's dream with a built-in BBQ and smoker, plus plenty of space to host. Convenience meets function with laundry on both the main and upper levels. All this while being minutes from top schools, shops, restaurants, and major routes.

Built in 2014

Essential Information

MLS® #	E4432249
Price	\$1,999,888
Bedrooms	4
Bathrooms	3.50
Full Baths	3
Half Baths	1
Square Footage	3,909
Acres	0.00



Year Built	2014
Type	Single Family
Sub-Type	Detached Single Family
Style	2 Storey
Status	Active

Community Information

Address	512 Hillcrest Point
Area	Edmonton
Subdivision	Patricia Heights
City	Edmonton
County	ALBERTA
Province	AB
Postal Code	T5R 4K8

Amenities

Amenities	Air Conditioner, Barbecue-Built-In, Ceiling 9 ft., Closet Organizers, Deck, Exterior Walls- 2"x6", No Animal Home, No Smoking Home, Vinyl Windows, Wet Bar, HRV System, Natural Gas BBQ Hookup
Parking	Triple Garage Attached

Interior

Interior Features	ensuite bathroom
Appliances	Air Conditioning-Central, Dishwasher-Built-In, Garage Control, Hood Fan, Oven-Microwave, Wine/Beverage Cooler, Dryer-Two, Refrigerators-Two, Washers-Two, Projector, Curtains and Blinds
Heating	Forced Air-2, Natural Gas
Fireplace	Yes
Fireplaces	Direct Vent, Double Sided, Stone Facing
Stories	3
Has Basement	Yes
Basement	Full, Finished

Exterior

Exterior	Wood, Stone, Hardie Board Siding
Exterior Features	Cul-De-Sac, Flat Site, Fruit Trees/Shrubs, Landscaped, Low Maintenance Landscape, No Back Lane, River Valley View, Schools, Shopping Nearby
Roof	Asphalt Shingles
Construction	Wood, Stone, Hardie Board Siding

Foundation Concrete Perimeter

School Information

Elementary Patricia Heights
Middle Laurier Heights
High Jasper Place High School

Additional Information

Date Listed April 23rd, 2025
Days on Market 78
Zoning Zone 22

DATA IS DEEMED RELIABLE BUT IS NOT GUARANTEED ACCURATE BY THE REALTORS® ASSOCIATION OF EDMONTON. COPYRIGHT 2025 BY THE REALTORS® ASSOCIATION OF EDMONTON. ALL RIGHTS RESERVED.Trademarks are owned or controlled by the Canadian Real Estate Association (CREA) and identify real estate professionals who are members of CREA (REALTOR®, REALTORS®) and/or the quality of services they provide (MLS®, Multiple Listing Service®)
Listing information last updated on July 9th, 2025 at 9:31pm MDT